

Decentralized Administration Authority of Crete

LIFE13/INF/GR/000188

ACTION B1:

*INFORMATION UPDATE AND ESTABLISHMENT OF A CLEARING –
HOUSE MECHANISM FOR THE NATURA 2000 NETWORK IN CRETE*

ACTION D1:

*ENVIRONMENTAL INTERPRETATION TECHNICAL GUIDE
OF ECOSYSTEM SERVICES IN NATURA 2000 SITES IN CRETE*

Forest Directorates - People involved in the project

Forest Directorate of
Coordination & Supervision
of Crete

Chania Forest Directorate

Rethymnon Forest
Directorate

Heraklion Forest Directorate

Lasithi Forest Directorate

□ **Coordinators**

Maria Kozyraki, Forester – Environmentalist - MLA, PhD Landscape Architecture. Forest Directorate of Coordination and Supervision

Georgia Xylouri, Forester – Environmentalist - MSc Environmental Planning. Forest Directorate of Coordination and Supervision

□ **Project Monitoring**

Despoina Stmatakis, Forester - Environmentalist, Forest Directorate of Coordination and Supervision

Maria Patergianaki Forester - Environmentalist, Forest Directorate of Coordination and Supervision

□ **External Partners**

Panagiotis Nyktas, Environmentalist, MSc, PhD Landscape Ecology

Vasileios Samaritakis, Forester- Environmentalist, MSc in GIS

□ **Forest Directorate of Decentralized Administration Authority of Crete**

Pantelis Arvanitis, Forester - Environmentalist, MSc, PhD in Geography, Heraklion Forest Directorate

Emmanuel Horitakis, Forester – Environmentalist, Heraklion Forest Directorate

Chariklia Kargiolaki, Forester – Environmentalist - PhD in Ecology, Rethymnon Forest Directorate

Eleftheria Kexagiadaki, Forester – Environmentalist, Rethymnon Forest Directorate

Dimitris Sopiadis, Forester – Environmentalist - PhD Mountain Hydrology , Chania Forest Directorate

Olga Koyliziaki, Forester, Chania Forest Directorate

Eleni Mavroudi, Forester – Environmentalist, Lasithi Forest Directorate

Paraskevi Gorgonopoulou Forester – Environmentalist, Lasithi Forest Directorate

LIFE13/INF/GR/000188. ACTION B1

Methodology for Action B1

- Evaluation of legislation for Natural Environment Conservation in Greece.
- National Policy – bodies in protection – conservation – of NATURA sites
- Development Catalog Data information, main for research use and studies in ecosystem services.
- Connection of Ecological values with socio-economical indicators in NATURA sites.
- Geospatial data production (Maps, graphs etc.)
- Main ecosystem services in the Natural Park of Samaria, the main and larger NATURA site in Crete.

Clearing House Mechanism

Development
of a GIS -
information
platform

Data-management Base:

A. Spatial data

- Land use
- Geo – capacity maps
- Spatial distribution of species and ecotypes
- Ecosystem maps
- Satellite imagery for vegetation monitoring
- Thematic Maps (administration, road network etc)

B. No Spatial data

- Statistical information and data, (2010 survey, Hellenic Statistical Authority): farming production, population, employment data, analyzed in local commune level

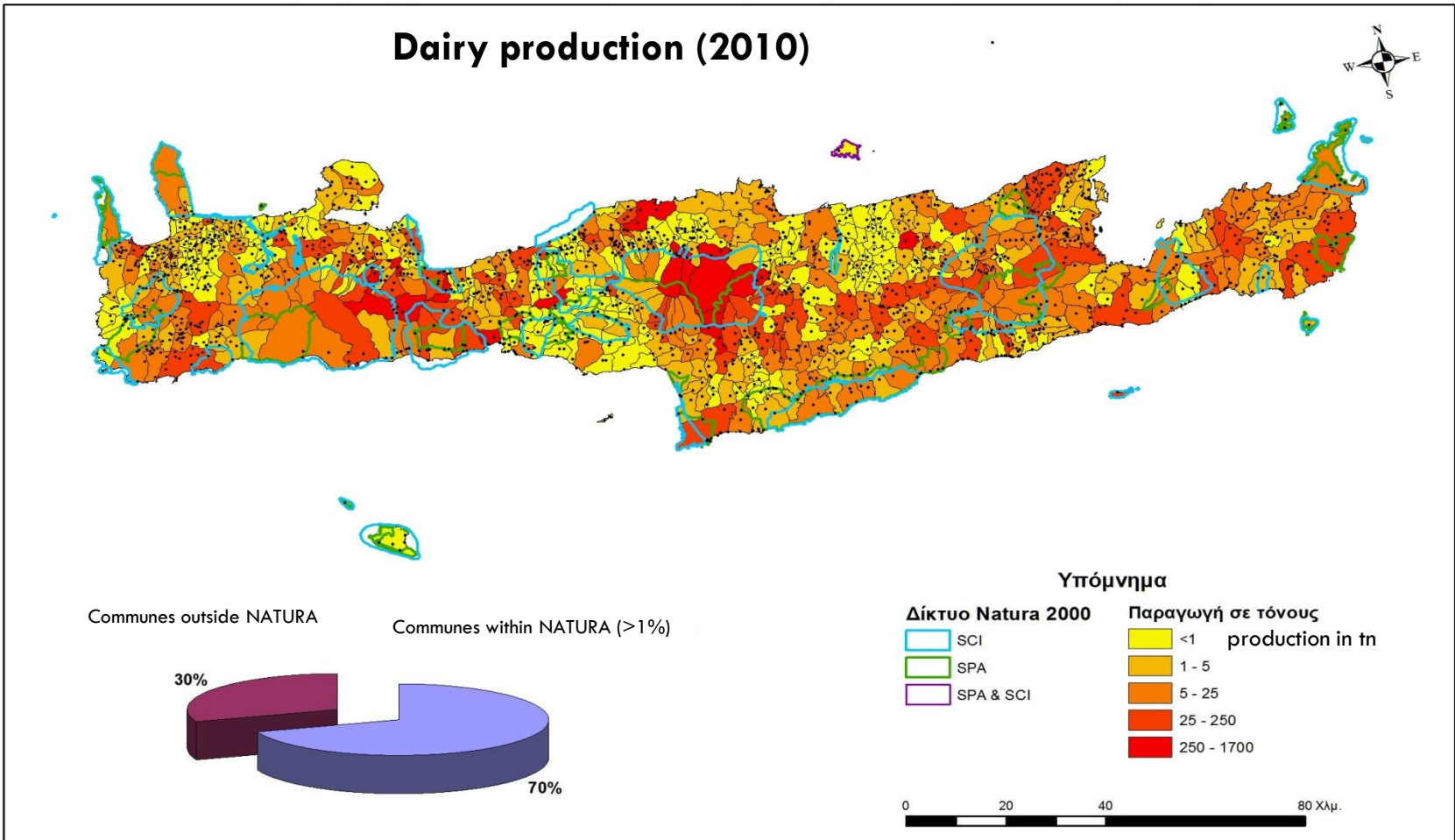
Clearing House Mechanism

Geography
of primary
production,
population
distribution,
employment
and
ecosystems in
Crete

- Spatial and no spatial data were merged and analyzed in the level of local Commune administration
- Analysis within and outside NATURA sites implemented
- 24 ecosystem service indicators were selected, derived from farming production.
- Amount of Ecosystem services were compared for the areas within or close to NATURA sites with the region of Crete.
- Similar comparison was established for 6 indicators concerning population and employment data.
- GIS analysis resulted in 31 maps.

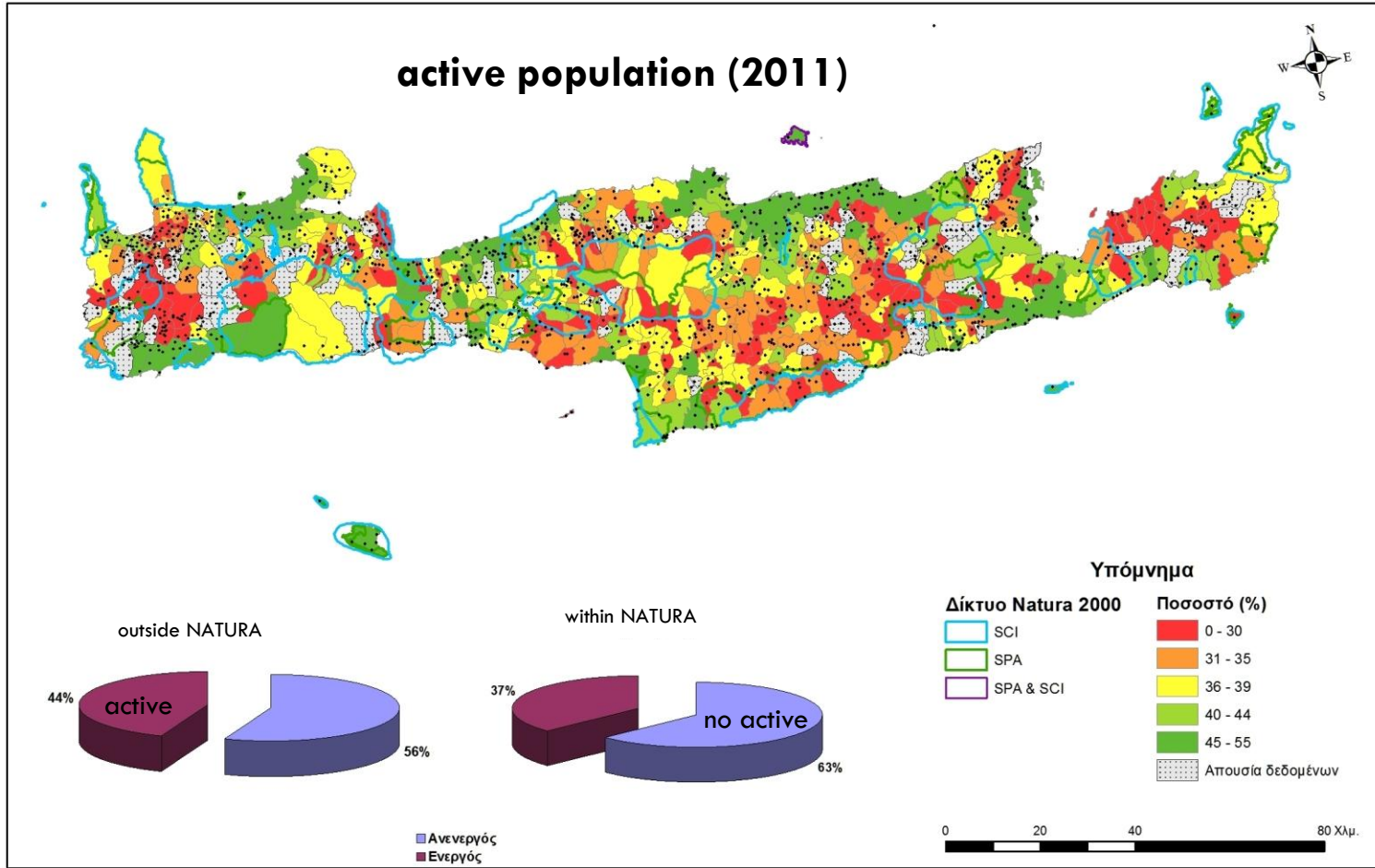
Geography of Primary production

Γεωγραφία Πρωτογενούς Παραγωγής στη Κρήτη:
Παραγωγή Γαλακτοκομικών-Τυροκομικών Προϊόντων (2010)



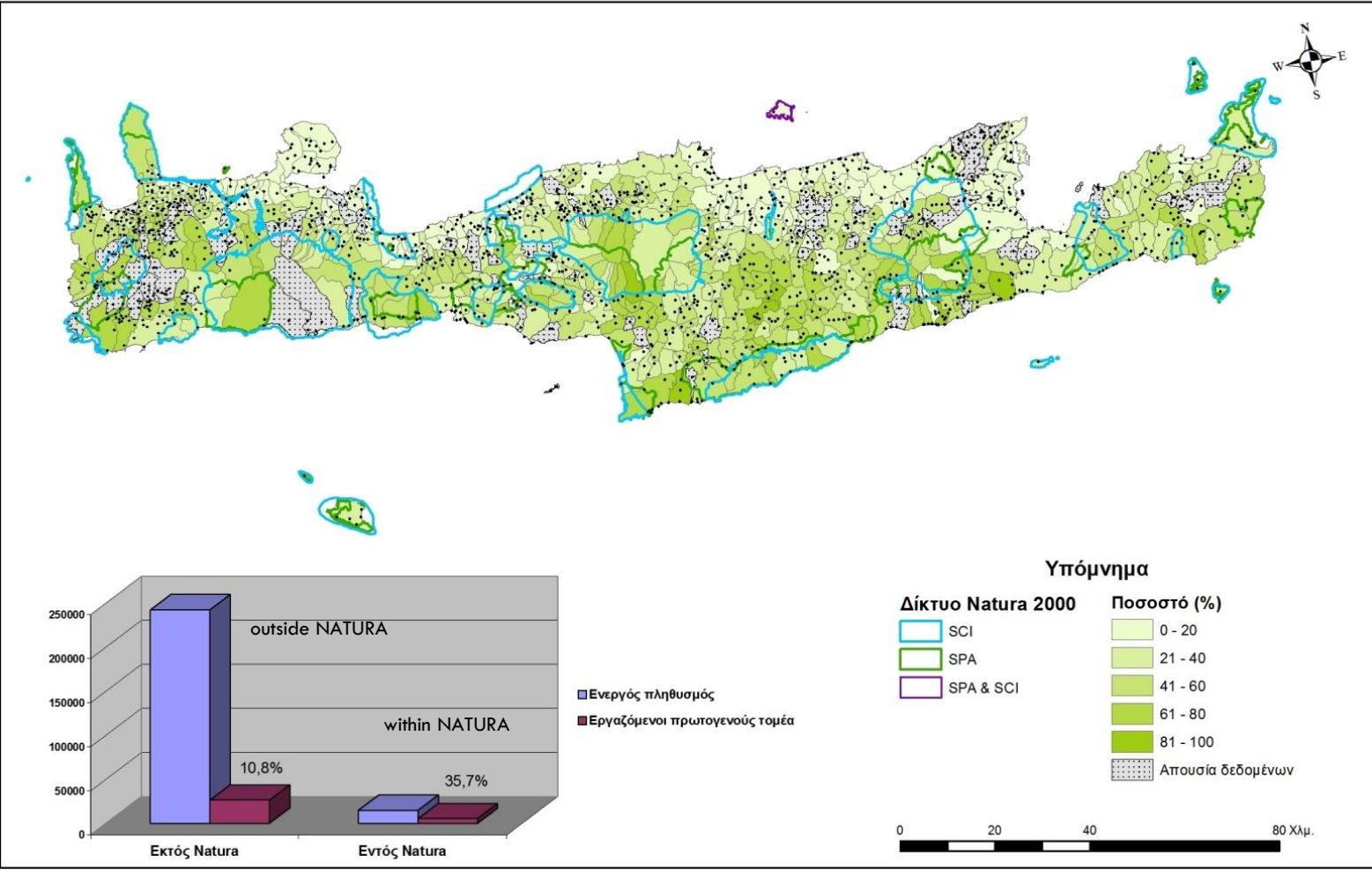
Population - Employment Geography

Πληθυσμός και Απασχόληση στην Κρήτη: Ποσοστό Ενεργού Πληθυσμού (2011)



Population - Employment Geography

EMPLOYMENT IN CRETE: WORKING PEOPLE IN PRIMARY SECTOR (%)



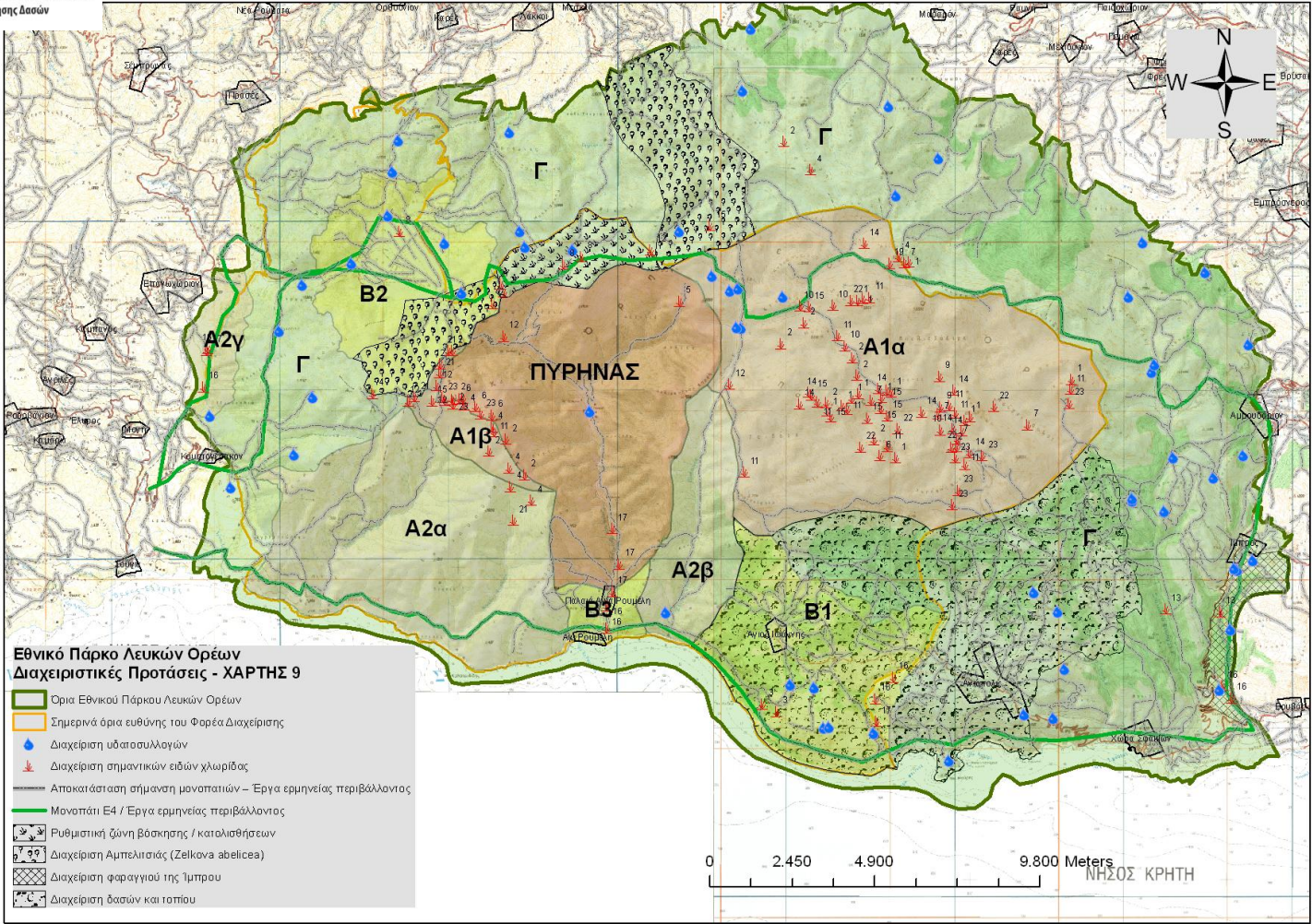
Case study: National Park of Samaria

Case Study of
NATURA 2000
site: GR434008
– Lefka Ori kai
paraktia zoni

- The importance of a National Park to the society and economy of the island of Crete (Demonstration).
- The main three attractions of Crete is Knossos Palace, Samaria Gorge and Vai forest.
- Services and benefits from the ecosystems of the Lefka Ori have been well studied offering better grounds for communication to the public.
- Lefka Ori was established in 1962, including a small area of the current National Park, namely the Samaria's Gorge, the rest of the site has similar land uses as the rest NATURA sites in Crete.
- Results of this analysis will be useful and representative for guide and use in the new established management bodies of Protected areas (planned to operate within 2018).

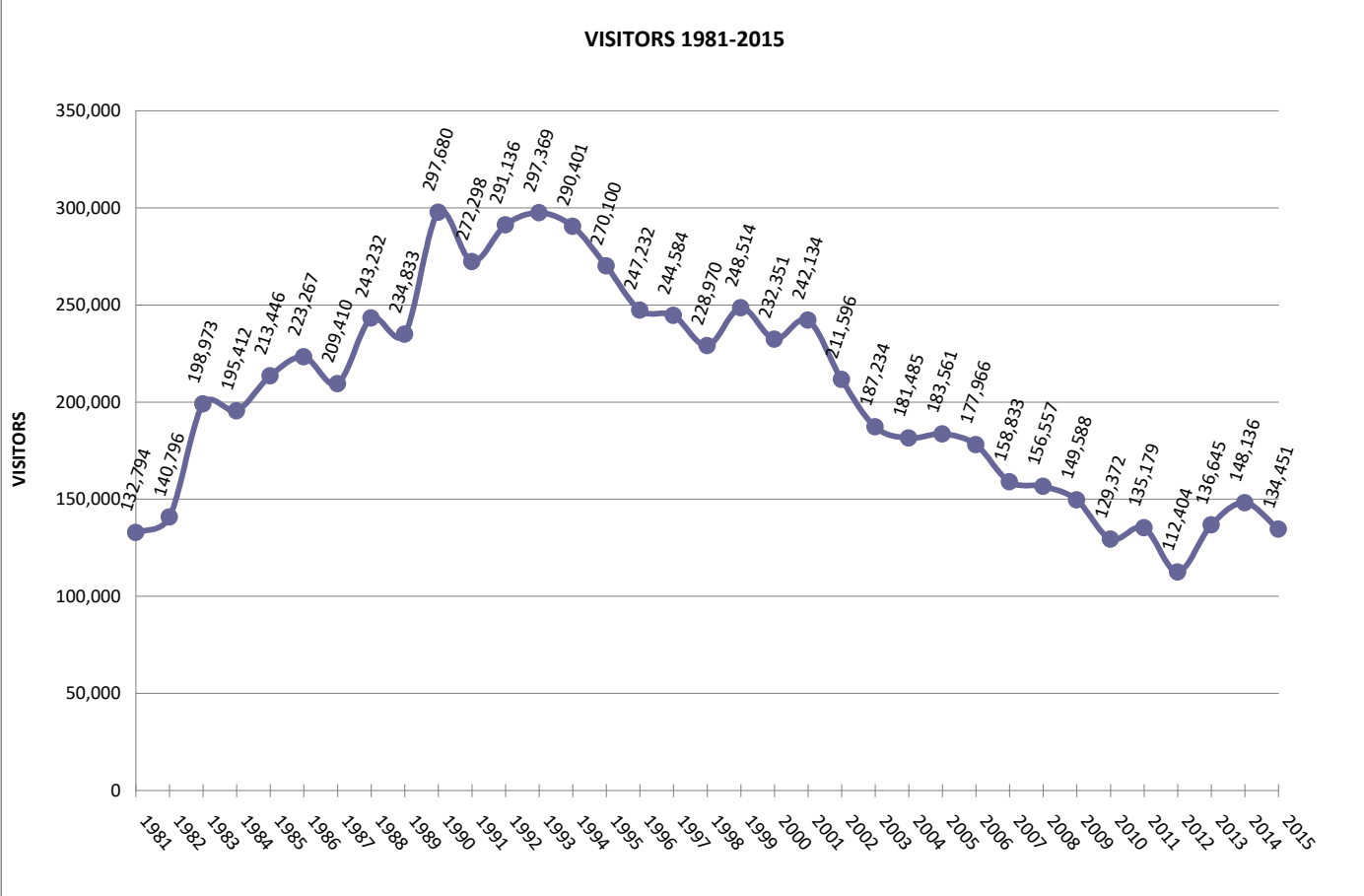
National Park of Lefka Ori - Samaria

ΕΛΛΗΝΙΚΗ ΔΗΜΟΚΡΑΤΙΑ
 ΑΠΟΚΕΝΤΡΩΜΕΝΗ ΔΙΟΙΚΗΣΗ ΚΡΗΤΗΣ
 ΓΕΝΙΚΗ ΔΙΕΥΘΥΝΣΗ ΔΑΣΩΝ ΚΑΙ ΑΓΡΟΤΙΚΩΝ ΥΠΟΘΕΣΕΩΝ
 Διεύθυνση Συντονισμού και Επιθεώρησης Δασών



Visitors of Samaria Gorge 1981 - 2015

Tourism in Samaria Gorge



Ecosystem Services: National Park of Samaria

Visitors
&
Touristic
development

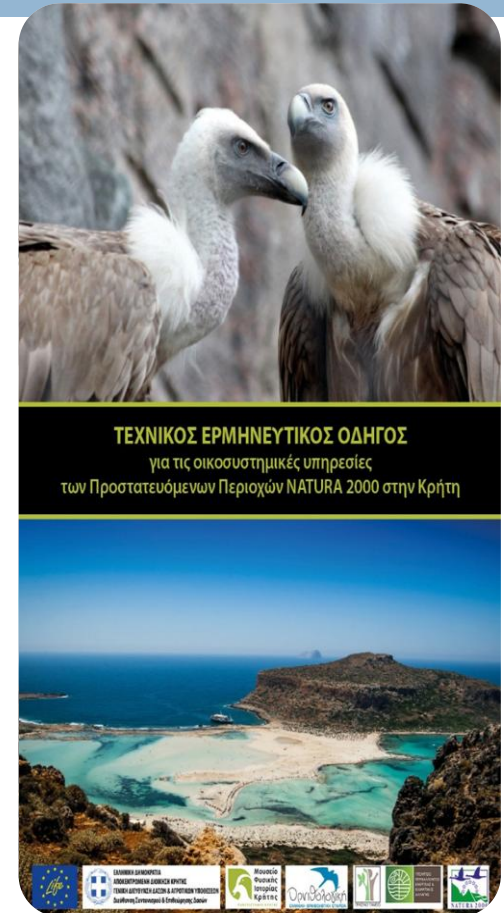
Visitation & financial accounting (year 2013):

- It is estimated that Samaria gorge visitors spent 3,425,000 € in local economy & 5,800,000 € in Chania Prefecture.
- Most of the businesses in the area are Small and Medium-sized Enterprises (SMEs), thus 85% of their profit stays in the local economy.
- Using a multiplier for tourist spending, the financial benefit to the local communities and the whole prefecture is estimated at 6,550,000 € and 11,100,000 € respectively.

Environmental Interpretation Technical Guide of ecosystem services in Natura 2000 sites in Crete: Action D1

ACTION D1

- Implemented by the Decentralized Administration Authority of Crete – Directorate General for Forests and Rural Affairs – Directorate of Coordination and Supervision of Forests for the LIFE Natura2000ValueCrete (LIFE13 INF/GR/000188) environmental awareness project, under the LIFE+ Information & Communication programme.
- Part of the action D1 (Training seminars for the target audiences) of LIFE Natura2000Value Crete was the production of a Environmental interpretation technical guide , which would be given to the professionals of the tourism industry to help them with the planning of their actions.



Contents of the guide

Contents:

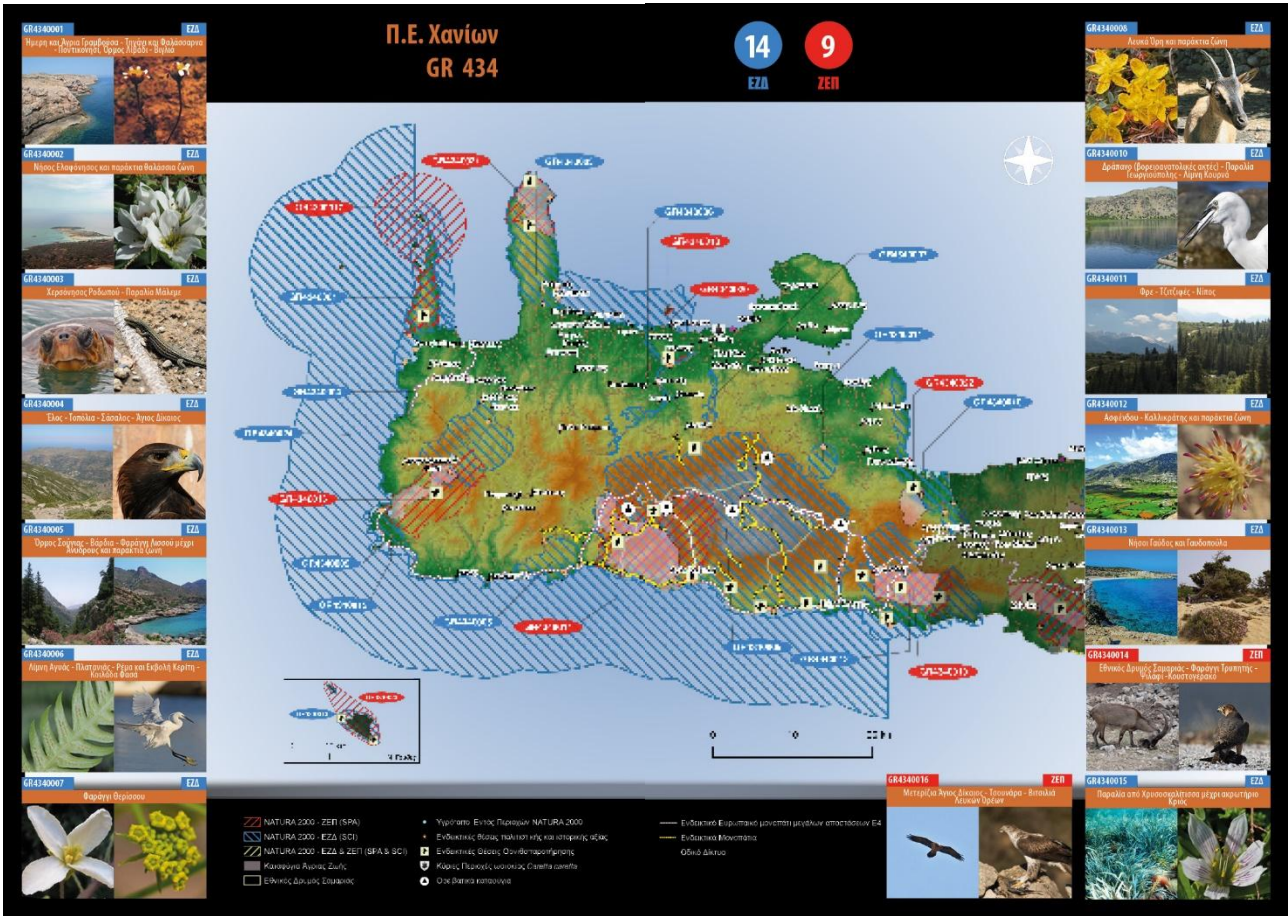
- General information about the Natura2000 Network (how the network was established and how Natura 2000 sites are selected)
 - Definition of ecosystem services – Characteristic examples of ecosystem services in Crete.
 - Permitted and prohibited human activities inside the Designated Areas of the Natura 2000 Network.
 - List with the 54 protected areas under the Natura2000 Network
 - Maps including the boundaries of the Natura 2000 Network in Crete with some characteristic photos of the sites.
 - Main activities that tourists can do inside the protected areas of the Natura 2000 Network (equipment, tips etc)
-
- **Size:** B5 (176 x 250 mm)
 - **Number of Pages:** 24
 - **Copies:** 1.000
 - **ISBN:** 978-618-83683-0-9



Maps

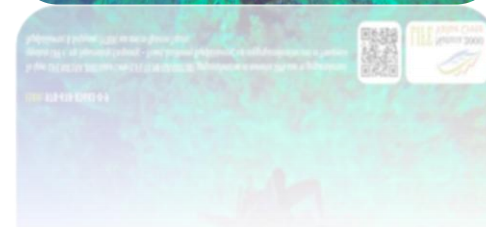
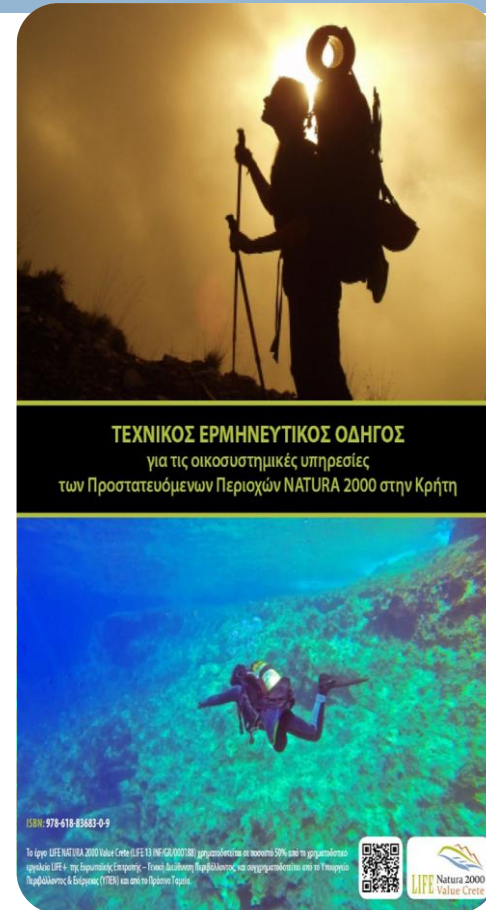
Contain:

- Natura2000 Network boundaries
- Characteristic photos of the sites
- Birdwatching spots
- Cultural and Historical spots
- *Caretta caretta* nesting areas
- Protected areas
- Paths, roads etc



Guide distribution

- Training seminar for tourism professionals in Marmaketo village on 24 March 2018
- Training seminar for tourism professionals in Omalos village on 31 March 2018
- Panhellenic conference “Natura 2000 Areas and Sustainable development” held in Chania on 10 May 2018



Participation in Conferences symposiums etc, Dissemination

Maria Kozyraki

Georgia Xylouri

Maria
Patergianaki

Despoina
Stamataki

Pantelis Arvanitis

- 53rd World Congress of the IFLA in Turin, Italy
- 18th Hellenic Forestry Conference, Edessa, Greece
- Afforestation Service of Central Macedonia, Thessaloniki
- 6th Symposium for Research in Protected Areas", Hohe Tauern National Park Administration Slazburg & Association National Parks Austria, Salzburg, Austria
- Conference (Forest ecosystems & Justice) of the Harokopio University & Association of the Administrative Judges in Athens, Greece

Equipment and Software

Forest Directorate
of Coordination
and Supervision

Forest Directorate
of Heraklion

Forest Directorate
of Rethimno

Forest Directorate
of Chania

Forest Directorate
of Lasithi

- 6 FUJITSU ESPRIMO P420 E85 P.C.s, distributed in the Forest Directorates (Heraklion, Chania, Rethymnon, Lasithi)
- ARCGIS 10.x for Desktop Basic (ArcView) Concurrent
- ARCGIS 10.x for Desktop Advanced (ArcINFO) Concurrent upgrade-maintenance of ArcGIS software
- High-resolution Satellite Images Rapideye 5m, 2016 files for NATURA 2000 areas of Crete (21 total image files, covering 4,000 km² of total area).

Continuation and extension of the project

New
Proposed
end Date
21/12/2018

to be
continued

- Training for Forest Personnel (foresters, forest rangers, etc)
- Dissemination of Action B1 - D1 results and guides to other public administration bodies
- The establishment of new Management Bodies in National Protected Areas (2018?): Need for further communication, dissemination and networking to implement a coordinated policy into protected areas.
- Actions needed from Ministry of Environment and Energy



LIFE13/INF/GR/000188

σας ευχαριστούμε για
την προσοχή σας

thank you for your
attention



HELLENIC REPUBLIC
DECENTRALIZED ADMINISTRATION AUTHORITY OF CRETE
DIRECTORATE GENERAL FOR FORESTS AND RURAL AFFAIRS
Directorate of Coordination and Supervision of Forests



GREEN FUND

